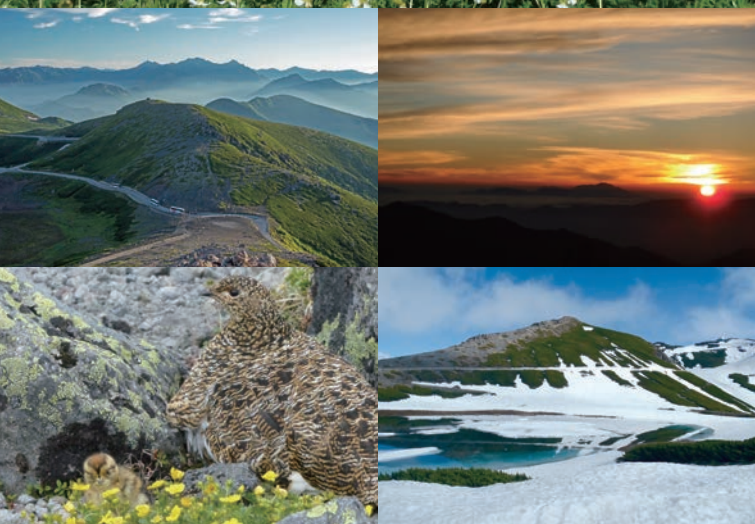


Come visit Mt. Norikura, the sacred mountain
Experience the blessings of nature
at 3,000 meters above sea level

Hida Takayama

Mt. NORIKURA

Chubu Mountains National Park



◇Contact details◇

Norikura Natural Environment Guide Center (Tatamidaira)

(May 15 ~ October 31) Luggage storage available (including coin lockers)

Tel: 090-8671-3191

Hida Norikura Tourism Association

Tel: 0577-78-2345 Address: 2000 Bokata, Nyukawa-cho, Takayama City 506-2121



Secrets of Mt. Norikura

A premium experience available only at Mt. Norikura



- ☆1 One of Japan's 100 famous mountains! The 100th mountain which is perfect for climbing with your family!
- ☆2 This bus stop is at a spot that is 2,702 meters above sea level. It's the highest bus stop in Japan!
- ☆3 Norikura Skyline road has the highest altitude of any road in Japan! It was used as a military road in the old days.
- ☆4 It takes only 90 minutes to climb to the mountaintop, which is 3,026 meters above sea level. Enjoy mountain climbing with your family!
- ☆5 Enjoy the beautiful natural environment protected by strict regulations against private cars. You can even spot some endangered ptarmigans!
- ☆6 An active volcano! Okuhida hot spring resort has the most number of open-air hot spring baths in the country.

Event Calendar

- May 15 Opening of mountaineering season at Mt. Norikura
Opening of Norikura Skyline (on the side of Gifu Prefecture)
- July 1 Opening of Norikura Echoline
(on the side of Nagano Prefecture)
- Early July Norikura Cycling Hill Climbing Festival
- July - September Mt. Norikura Astronomical Observation,
Nature Observation Workshop
- August 8 Norikura Hongu Reisai Festival (the Lion Dance offering)
- August 11 Mountain Day (Special events are held on this day)
- October 31 Closing of mountaineering season at Mt. Norikura



You can also enjoy sightseeing in the area around Mt. Norikura!



①Hida Takayama



②Shirakawa-go



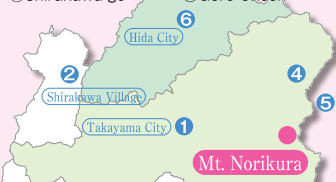
③Gero Onsen



④Shinhotaka Ropeway



⑤Kamikochi



⑥Hida Kamioka



⑥Hida Kamioka

For inquiries about access and buses to Mt. Norikura, contact:

Nohi Bus Takayama Bus Center Tel: 0577-32-1688

- Takayama Nohi Bus Center (Takayama Station)→ Mt. Norikura (Tatamidaira) 90 min.
- Hirayu Bus Terminal (Okuhida hot spring resort)→ Mt. Norikura (Tatamidaira) 60 min.
- Honoki-daira Bus Terminal (parking available)→ Mt. Norikura (Tatamidaira) 45 min.

*Please take the bus or taxi to Mt. Norikura (private cars are not allowed in the area)



Seasonal attractions of Mt. Norikura

May / June

◎Snowpacking / Ptarmigans / Snow recreation

- ◆The Norikura Shuttle Bus begins operation on May 15 after snow on the side of Gifu Prefecture has been cleared.
- ◆On days when there is heavy snow, you can walk through a path with snow walls that become as high as 5 to 6 meters.
- ◆Ptarmigans are usually seen in pairs protecting their territories. Male birds sit on an elevated spot for a long time to watch over their territory. If another male bird should enter the territory, it will start a fight, and the intruder will be chased far away.
- ◆If you go to the top of Mt. Mao or Mt. Daikoku, you will be able to enjoy a spectacular view of the Northern Alps covered in snow with a blue sky backdrop.
- ◆To climb to the top of the main peak of Mt. Kengamine, you must be properly equipped and dressed for winter mountains, because the peak will still be covered with snow.
- ◆You can also enjoy snow recreation and spring skiing.



July / August

◎Flower field / Climbing a mountain 3,000 meters high / The rising sun

- ◆As the snow melts away, flower fields will start appearing. Flowers that had been growing quietly underneath the snow will start blooming all at once. From after mid-July to mid-August, about 60 varieties of alpine plants will cover the mountain with beautiful colors.
- ◆Baby Ptarmigans start to hatch in early July. Baby birds usually hide away from their natural enemies such as martens, short tail weasels, and foxes, but there is a good chance you will be able to see them on a foggy day.
- ◆Snow on the highest peak, Mt. Kengamine, will start to melt in mid-July and the mountain will see the arrival of Summer. Even families with small children will be able to enjoy mountain climbing as long as they move slowly up the mountain.
- ◆From mid-July to mid-September, there will be an early morning bus operating to carry visitors to catch the sunrise. It takes only 20 minutes on foot to reach the sunrise view spot from the bus stop. You will be filled with joy as you bathe in the divine light of the rising sun.



September / October

◎Autumn colors / Ptarmigans / Sea of clouds

- ◆This is the season when the green of the creeping pine, the white snow, the cobalt blue lake, and Lake Kiezugaikae all come together to create the most breathtaking scenery.
- ◆From late September to early October, the grasses around Tatamidaira bus terminal start to change color, signaling the beginning of autumn foliage descending the mountain. In October, the entrance of Norikura Skyline, the Hirayu ridge will be dyed in the yellow of autumn.
- ◆The Ptarmigan family eats the berries of alpine plants to prepare for winter, and the chicks will grow to be as big as the adult birds. Their feathers will become white, a sign that they are beginning to prepare for the cold season.
- ◆Toward the end of October, snow will start to fall. The Norikura Shuttle Bus will stop operating for the season on October 31, and Tatamidaira will start a hibernation that lasts for the six months of snow.



Mt. Norikura is a mountain where the climate can change very quickly, and the temperature tends to stay low even in the summer. Please make sure to bring some outdoorwear with you.